



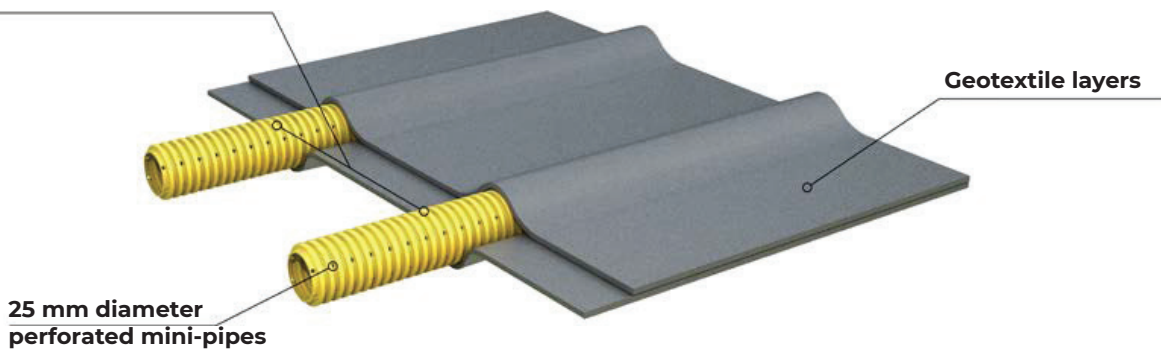
# DRAINTUBE™

LANDFILL GAS  
MANAGEMENT APPLICATIONS

# DRAINTUBE™ to Collect and Control Gas at Each Stage of the Landfill's Life



Distance between mini-pipes 25 cm to 200 cm

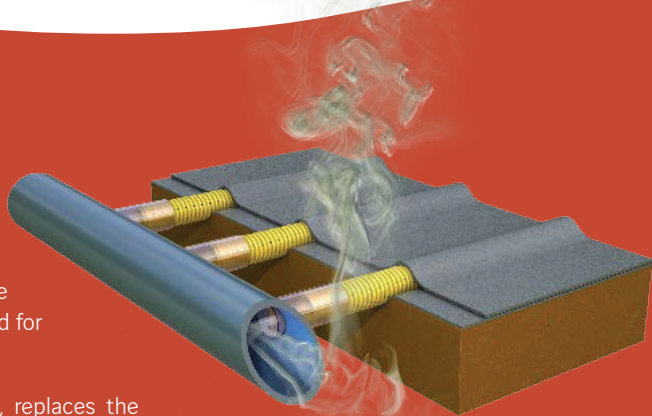


## During Operation- Horizontal LFG collection within the waste mass

Landfill Gas (LFG) needs to be effectively extracted from active landfills to comply with the regulation of air pollution. The target is to achieve 75% lifetime gas capture rate recommended for Municipal Solid Waste (MSW) landfills.

**DRAINTUBE™**, when placed directly within the waste mass, replaces the traditional horizontal LFG trenches.

It is unrolled directly on the waste and connected to the LFG system conveyance pipe using Quick Connect System™.



# During Operation- Temporary Cap with LFG Collection

Temporary caps are used in open landfill cells to limit the rainfall infiltration into the waste and prevent escape of gas from the sides of the landfills.

Installed directly under the geomembrane, **DRAINTUBE™** allows the gas to collect and controls the built-up pressure of LFG. It is connected to the LFG system conveyance pipe using Quick Connect System™ and a vacuum can be applied.

Flexible and easy to install, **DRAINTUBE™** provides a dense mini-pipe network, that helps solve any LFG surface emission concerns.



## Closure LFG drainage within the final cover system

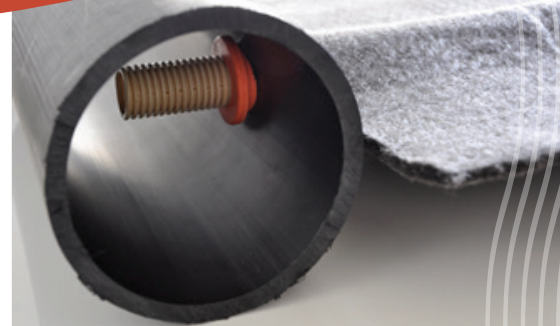
The final cover system must include a gas venting layer to provide a conduit for LFG to travel to gas wells. **DRAINTUBE™** as gas venting layer improves the collection rate, limits the gas pressure under the geomembrane and protects it from unexpected mechanical damages.

**DRAINTUBE™** can be connected to the LFG network through a regular collector trench or directly to a manifold using Quick Connect System™.

## Quick Connect System™

The **DRAINTUBE™** mini-pipes can be positively connected to interceptor drains without trenches with the Quick Connect System™.

Quick Connect System™ creates an airtight connection between the gas piping network and **DRAINTUBE™**.



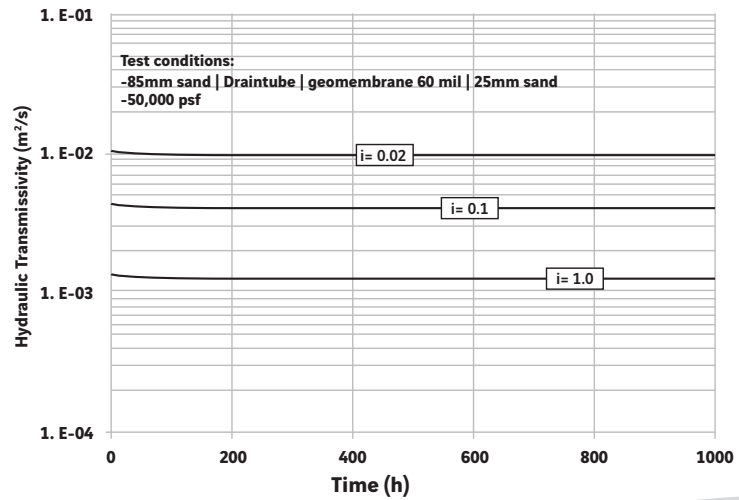
# Design Considerations for Long Term Performance

**DRAINTUBE™** offers better long term performance than any other drainage geocomposite. Its flow capacity remains the same, whatever load is applied on it. This leads to a higher safety factor in performance design.

The improved long term performance is achieved through soil arching over the pipes when confined. Due to its structure, **DRAINTUBE™** is not susceptible to geotextile intrusion, which reduces the flow in standard geocomposites.



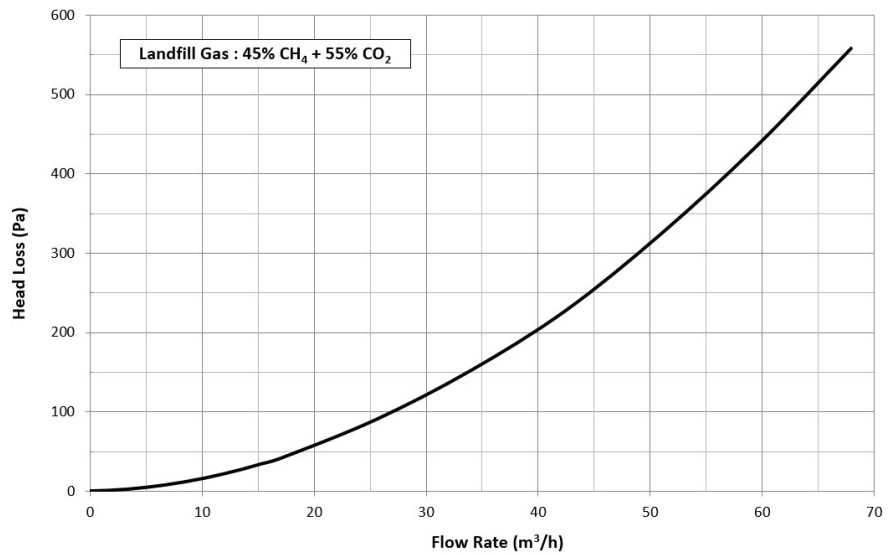
Hydraulic Transmissivity of DRAINTUBE™ under 2394 kPa



## Head Loss Calculation

Thanks to Lympha software, the **DRAINTUBE™** collection flow rate can be determined for each project function for the type of gas, the applied vacuum, the length of drainage, etc.

DRAINTUBE™ - Head Loss per 30 m



[www.asia.geoquest-products.com](http://www.asia.geoquest-products.com) | [www.aftex.com](http://www.aftex.com) | E: [info.asia@geoquest-products.com](mailto:info.asia@geoquest-products.com)

Neither this brochure/leaflet nor its text, illustrations, drawings or any part thereof, may be reproduced, stored in a retrieval system, photocopied, recorded or transmitted in any form, whether electronic or otherwise, without the consent of Geoquest and Aftex.

Descriptions and some illustrations contained in this catalogue are from computer

generated imagery and actual product may differ wholly or partially. The images are only for static representation of the actual product. Geoquest and Aftex Management cannot be held liable for any inaccuracies of description or illustration and reserve the right to change specifications without notification.